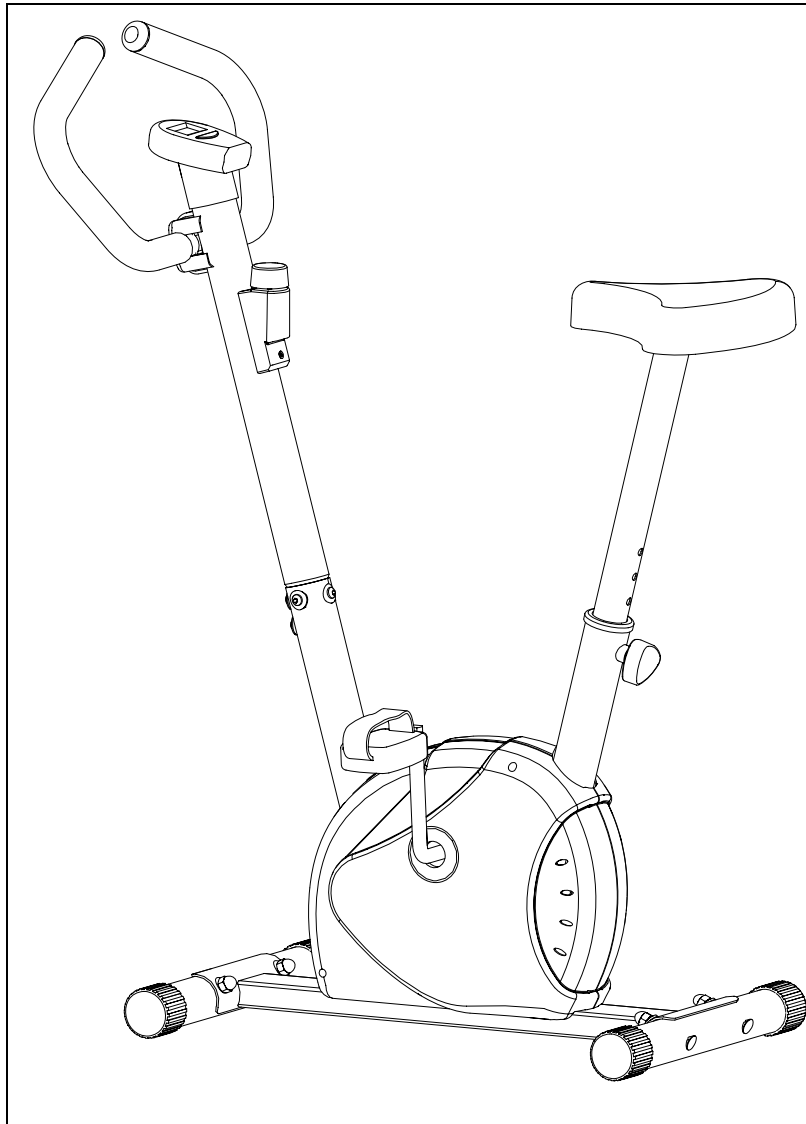




Sprint Fitness Cycle

OWNER'S MANUAL



FN-10281

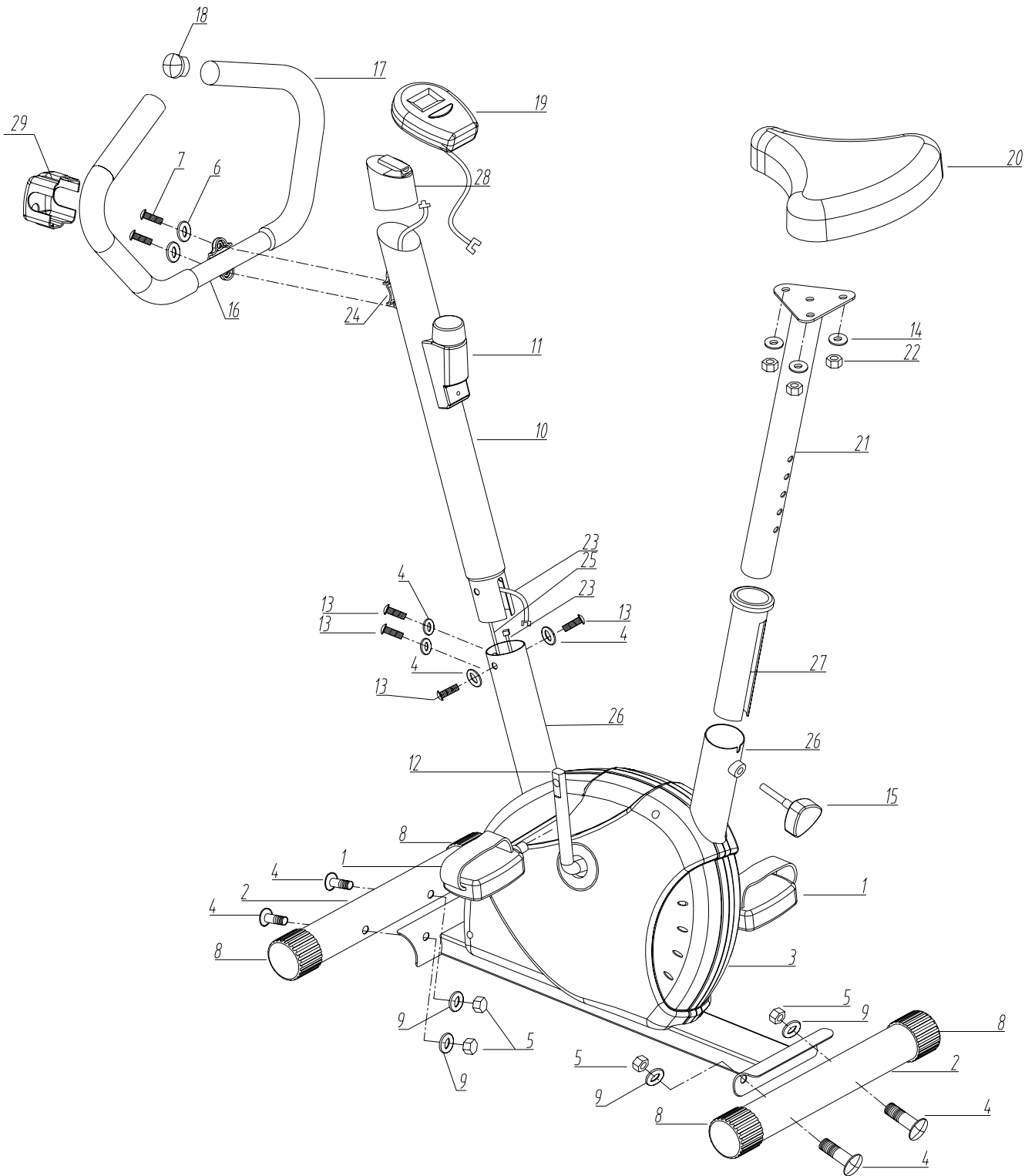
Table of Contents

<i>Important Safety Information</i>	3
<i>Exploded-View Assembly Drawing</i>	4
<i>Parts List</i>	5
<i>Assembly Instructions</i>	7
<i>Exercise Instructions</i>	9
<i>Exercise Computer</i>	11
Trouble Shooting	12
Care and Maintenance	12

Important Safety Information

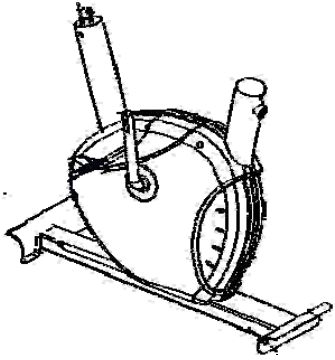
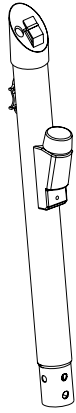
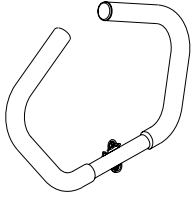
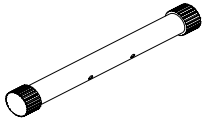
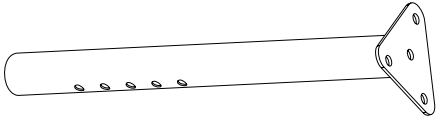
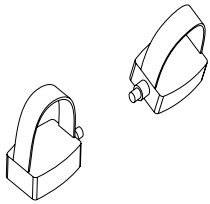
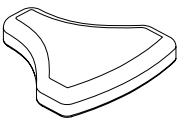
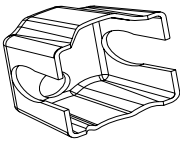
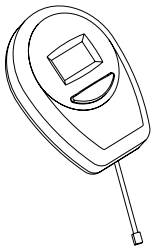
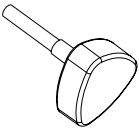
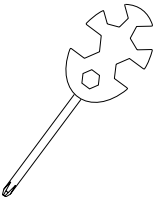

Please keep this manual in a safe place for easy reference.

1. It is important to read this entire manual before assembling and using the equipment.
Safe and effective use can only be achieved if the equipment is assembled, maintained and used properly. It is your responsibility to ensure that all users of the equipment are informed of all warnings and precautions.
2. Before starting any exercise program you should consult your doctor to determine if you have any medical or physical conditions that could put your health and safety at risk or prevent you from using the equipment properly. Your doctor's advice is essential if you are taking medication that affects your heart rate, blood pressure or cholesterol level.
3. Always be aware of your body's signals. Incorrect or excessive exercise can be detrimental to your health. Stop exercising if you experience any of the following symptoms: pain, tightness in your chest, irregular heartbeat, extreme shortness of breath, lightheadedness, dizziness or feelings of nausea. If you do experience any of these conditions you should consult your doctor before continuing with your exercise program.
4. Keep children and pets away from the equipment. The equipment is designed for adult use only.
5. Use the equipment on a solid, flat level surface with a protective cover for your floor or carpet. To ensure safety, the equipment should have at least 1.65 feet of free space around it.
6. Before using the equipment, check that all nuts and bolts are securely fastened.
7. The safety of the equipment can only be maintained if it is regularly examined for damage and/or wear and tear.
8. Always use the equipment as indicated. If you find any defective components while assembling or checking the equipment, or if you hear any unusual noises coming from the equipment during use, stop immediately. Do not use the equipment until the problem has been rectified.
9. Wear suitable clothing while using the equipment. Avoid wearing loose clothing that may get caught in the equipment or that may restrict or prevent movement.
10. The equipment has been tested and certified to EN957 under class H.C. Suitable for home use only.
Maximum weight of user: 220 lbs. Braking ability is independent of speed.
11. The equipment is not suitable for therapeutic use.
12. Care must be taken when lifting or moving the equipment so as not to injure your back. Always use proper lifting techniques and/or seek assistance if necessary.



Part List

No.	Description	Qty.
1	Foot Pedals (marked Left and Right)	2
2	Front and Rear Leg Assemblies	2
3	Main Frame Base	1
4	Bolt (M8*65mm)	4
5	Dome Nut	4
6	Flat Washer	9
7	Quick Release Bolt	2
8	End Caps	4
9	Arc Washer	4
10	Handlebar Post	1
11	Tension control knob	1
12	Crank	2
13	Bolt (M8*15mm)	4
14	Washer	3
15	Locking Knob	1
16	Handle Bar	1
17	Foam Grip	2
18	End cap $\Phi 7/8''$	2
19	Exercise Computer	1
20	Seat	1
21	Seat Post	1
22	Nut	3
23	Computer cable	1
24	24 metal clip	1
25	Resistance cable	1
26	Handlebar Post	1
27	Plastic Bushing	1
28	Exercise Computer Holder	1
29	Handle Cover	1

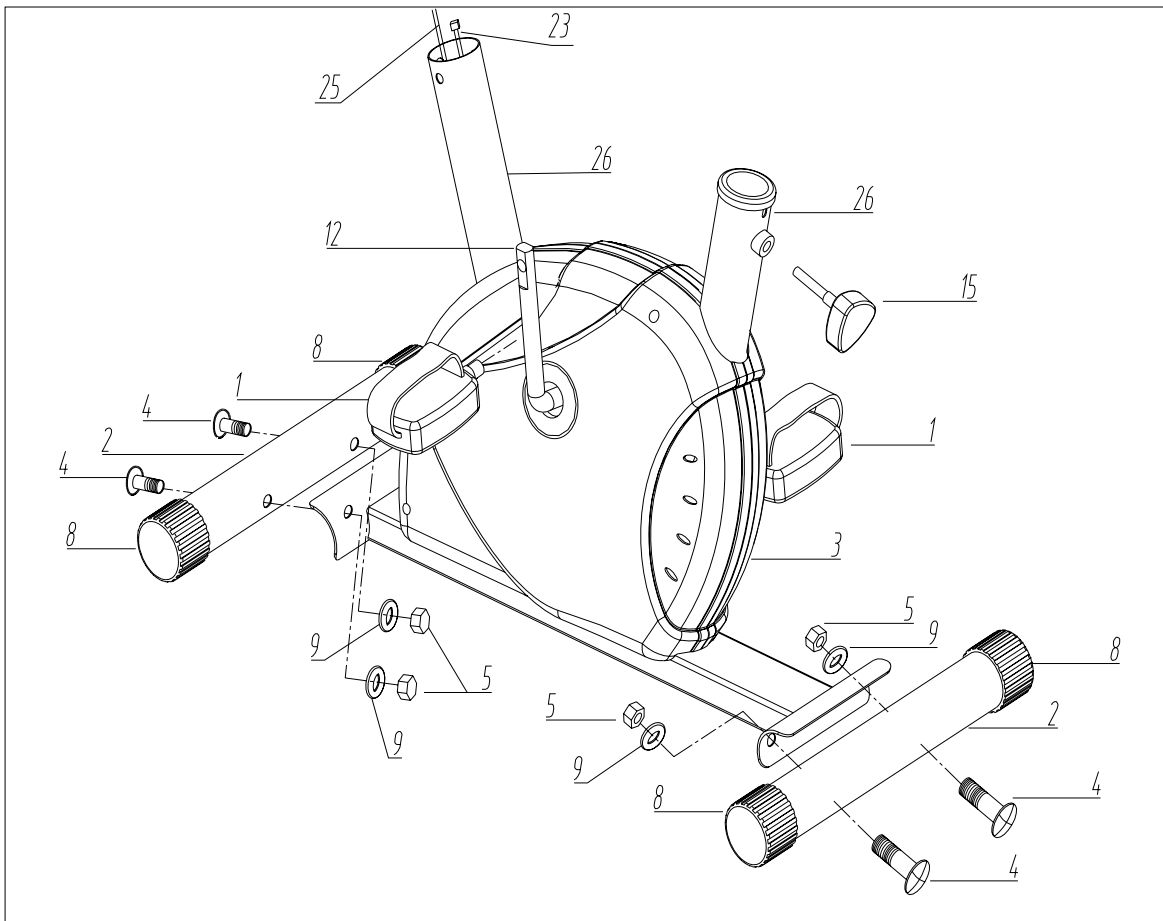
<p style="text-align: center;">I</p> 	<p style="text-align: center;">II</p> 	<p style="text-align: center;">III</p> 
<p style="text-align: center;">IV</p> 	<p style="text-align: center;">V</p> 	<p style="text-align: center;">VI</p> 
<p style="text-align: center;">VII</p> 	<p style="text-align: center;">VIII</p> 	<p style="text-align: center;">IX</p> 
<p style="text-align: center;">X</p> 	<p style="text-align: center;">46</p> 	<p style="text-align: center;">47</p> 

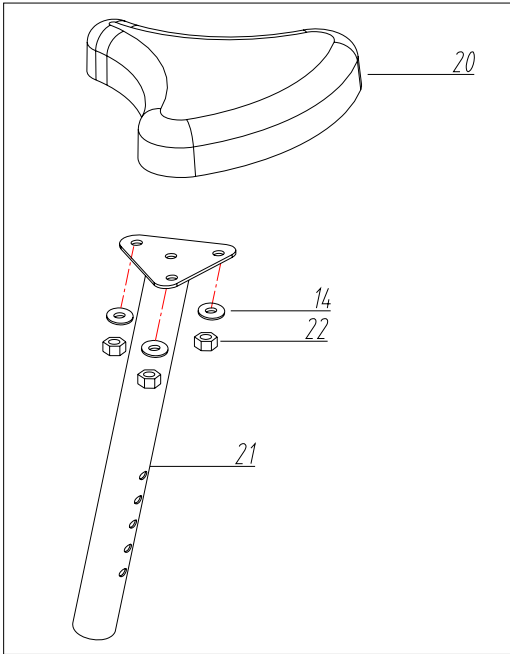
Assembly Instructions

Step 1:

Assemble Front and Rear Leg assemblies (2) onto the Main Frame Base (3) using 4-sets of Bolts (4), Arc Washers (9), Dome Nut (5) and Flat Washers (6)

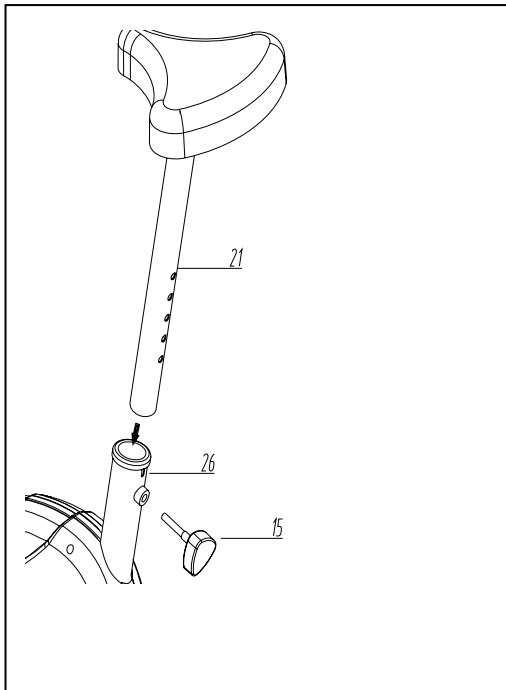
Assemble the Right Foot Pedal (1a) onto the right Foot Crank (12) using the supplied tool. Be sure to rotate the foot pedal in a clockwise direction.
Assemble the Left Foot Pedal (1b) onto the Left Crank (12) using the supplied tool. Be sure to rotate this foot pedal in a counter clockwise direction.





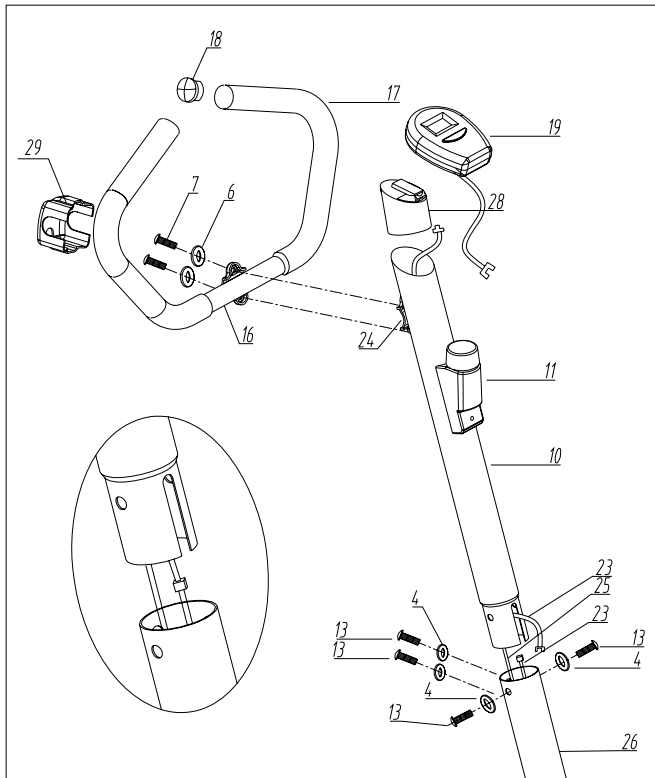
Step 2:

Assemble Seat (20) to the Seat Post (21) using 3 sets of Nuts (22) and Washers (14).



Step 3:

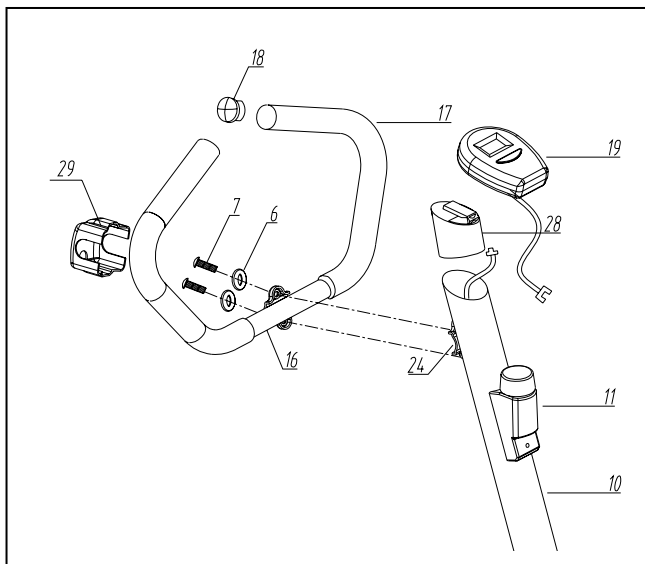
Insert the seat assembly into the Main Frame Seat Post (26) and secure into place at the desired height using the Locking Knob (5),



Step 4:

Connect Computer Cables (23) together as shown in detail.

Carefully insert the Handle Bar Post (10) into the Main Frame (3) and secure with 4 sets of Bolts (13) and Washers (6).



Step 5:

Assemble Handle Bar (16) to the Handle Bar Post (10) using 2-sets of Quick Release Bolts (7), and Washers (6). Snap the Bolt Cover in place as shown.

Insert the Handle Bar End Caps (8) into both ends of the Handle Bar (16).

Connect the Exercise Computer wire into the sending wire from the Main Frame Post (10), and snap the Exercise Computer (19) into its holder as shown.

Note: after the installation is finished, check all the connections to ensure the safe use.

Exercise Instructions

Using your **CYCLE** will provide you with several benefits. It will improve your physical fitness, tone your muscles and, in conjunction with a calorie-controlled diet, help you lose weight.

MUSCLE TONING

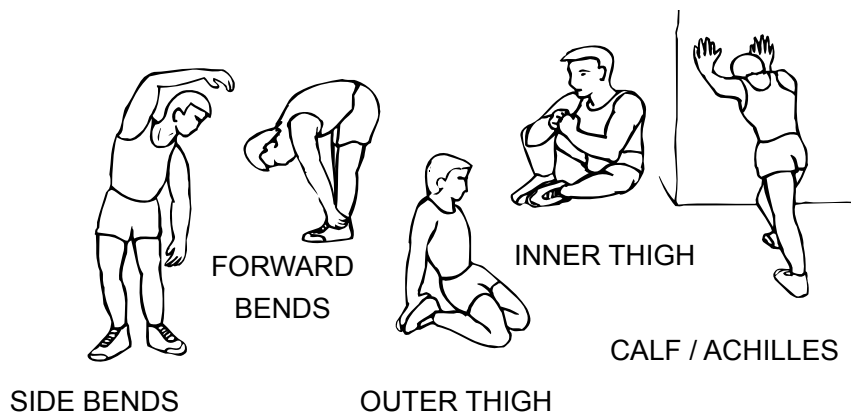
To tone muscles while on your **CYCLE** you will need to have the resistance set quite high. This will put more strain on your leg muscles and may mean you cannot train for as long as you would like. If you are also trying to improve your fitness you need to alter your training program. You should train as normal during the warm up and cool down phases, but towards the end of the exercise phase you should increase resistance making your legs work harder. You will have to reduce your speed to keep your heart rate in the target zone.

WEIGHT LOSS

The important factor here is the amount of effort you put in. The harder and longer you work the more calories you will burn. Effectively this is the same as if you were training to improve your fitness, the difference is the goal.

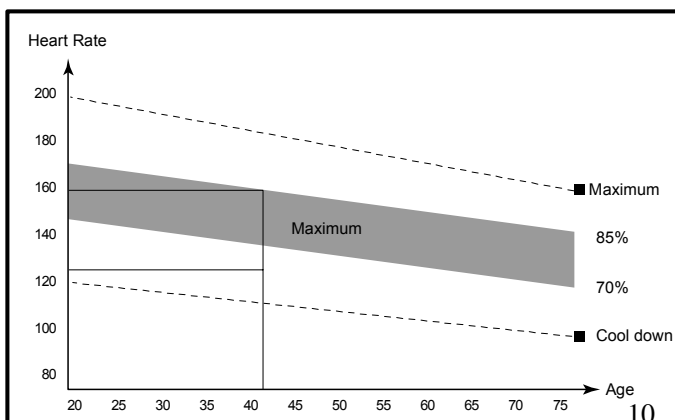
THE WARM UP PHASE

This stage helps get the blood flowing around the body and the muscles working properly. It will also reduce the risk of cramps and muscle injury. It is advisable to do a few stretching exercises as shown below. Each stretch should be held for approximately 30 seconds. Do not force or jerk your muscles into a stretch - if it hurts, STOP IMMEDIATELY.



THE EXERCISE PHASE

This is the stage where you put the effort in. After regular use, the muscles in your legs will become more flexible. Work at your own pace and be sure to maintain a steady tempo throughout. The amount of work should be sufficient to raise your heart rate into the target zone shown on the graph below.



This stage should last for a minimum of 12 minutes though most people start at about 15-20 minutes

THE COOL DOWN PHASE

This stage is to let your Cardio-vascular System and muscles wind down. This is a repeat of the warm up exercise (e.g. reduce your tempo). Continue for approximately 5 minutes. The stretching exercises should now be repeated, again remembering not to force or jerk your muscles into the stretch.

As you get fitter you may need to train longer and harder. It is advisable to train at least three times a week, and if possible space your workouts evenly throughout the week

Exercise Computer

Display Functions:

TIME -----00:00~59.59MIN
SPEED -----0.00~99.9 KM/H(KM/H)
DISTANCE -----0.000~99.99 KM (KM)
CALORIES -----0.00~9999KCAL

KEY FUNCTIONS:



1. TIME: Press the MODE button until the cursor displays under TIME. The Total time will be shown when starting to exercise.
2. SPEED: Press the MODE button until the cursor displays under SPEED. Your current Speed will be shown when exercising.
3. DISTANCE: Press the MODE button until the cursor display under DISTANCE. The total distance will be shown when starting to exercise.
4. CALORIE: Press the MODE button until the cursor displays under CAL. The total calories burned will be shown when starting to exercise.
5. SCAN: Press the MODE button until the cursor displays under SCAN. The display will scan through all functions in 4 second intervals in the following order:
SPEED-TIME-CALORIE-DISTANCE

NOTE:

1. The display will be shut off automatically after 4 minutes of non-activity.
2. The display will auto turn on automatically once activity is re-commenced.
3. If the display becomes dim you should replace the battery.
4. Computer operated by 2 x AA batteries (included)

Trouble Shooting:

1. **Change the battery.** To change the computer battery, please slide the computer from the computer holder, remove the battery cover on the back of the computer console, and remove the batteries. Replace with 2-AA batteries. Finally put the cover back on the console, and slide the computer back on the computer holder.
2. **Computer not working correctly.** If your computer is not working correctly, please check whether the lower sensor wire is connected to the upper sensor wire, and make sure the upper sensor wire is plugged into the computer. When you have checked the above, and the computer still not working, then please make sure the batteries are installed correctly in the computer and that the batteries are still working.
3. **No resistance.** If there is no tension resistance on the CYCLE, please make sure the upper tension cable is connected to the lower tension cable.

BATTERY DISPOSAL

1. A spent battery is hazardous waste - please dispose of it correctly and do not throw it in the trash. Please see your local battery retailer for disposal options.
2. Keep batteries out of the reach of small children. Batteries are extremely dangerous when swallowed. If a battery has been swallowed, seek immediate medical treatment.

Care and Maintenance

1. Check before the CYCLE is first used and again at regular intervals that all screws, bolts, nuts and other connections have been done up tightly to ensure that your training equipment is in safe operating condition.
2. Periodically check all moving parts, upholstery and grips for signs of wear or damage. If there is a problem or replacement parts are necessary, STOP USING THE EQUIPMENT and immediately contact your local retailer. DO NOT use the EQUIPMENT until repaired.
3. Lubrication of all moving parts is essential to the longevity and optimal performance of your Elliptical Bike. We recommend the use of a clear aerosol, silicone or Teflon spray. Do not use oil based lubricants as they will attract dust, dirt and grime and will eventually gum up and erode bushings and sealed bearings.
4. As needed, upholstery may be cleaned with a mild solution of soap and water. Regular use of a vinyl treatment will add to the life and appearance of your upholstery.
5. All chrome plated surfaces should be cleaned regularly to prolong the life and luster of the finish. Wipe the machine down with a commercial grade or automotive type chrome polish.
 1. Check welds for signs of cracks. Discontinue use immediately if cracks are found.
 2. Failure to perform routine maintenance could result in personal injury and/or equipment damage.

Safety Notice

Not recommended for use without competent adult supervision.

It is important to read this entire manual before assembling and using the equipment. Safe and effective use can only be achieved if the equipment is assembled, maintained and used properly. It is your responsibility to ensure that all users of the equipment are informed of all warnings and precautions.

**If you experience any problems or require any further assistance,
please contact
our Customer Service line on 818-357-2339.**

Limited USA Warranty

NuQuest International Inc. Warrants iGym™ Fitness Equipment to be free from defects in workmanship and material under normal use and service conditions. Parts are warranted for one hundred and eighty (180) days after the date of purchase.

This warranty extends only to the original purchaser. NuQuest Intl's obligation under this warranty is limited to replacement parts. This warranty does not extend to any product or damage to a product caused by or attributable to freight damage, abuse, misuse, improper or abnormal usage, for commercial or rental purposes; or products used as store display models. No other warranty beyond that specifically set forth above is authorized by NuQuest International.

NuQuest International is not responsible or liable for indirect, special or consequential damages arising out of or in connection with the use or performance of the product or damages with respect to any economic loss, loss of property, loss of revenues or profits, loss of enjoyment or use, costs of removal or installation or other consequential damages of whatsoever nature.

Some states do not allow the exclusion or limitation of incidental or consequential damages. Accordingly, the above limitation may not apply to you. The warranty extended hereunder is in lieu of any and all other warranties and any implied warranties of merchantability or fitness for a particular purpose is limited in its scope and duration to the terms set forth herein. Some states do not allow limitations on how long an implied warranty lasts. Accordingly, the above limitation may not apply to you.

This warranty gives you specific legal rights. You may also have other rights which vary from state to state.

Congratulations on your purchase of fitness equipment. You may register your product with the form below or simply go to our website at:

http://www.nuquestintl.com/Warranty_Page.html.

Registering your product makes it easier for us to help you obtain service for your product so don't delay and register today.

Registration form can be sent to:

Nuquest International Inc.
19360 Rinaldi St. Suite 332 Porter Ranch, CA 91326



Product Warranty and Registration Card

Your name:

Address:

City:

State: * Zip Code:

Email:

Product Name

Product Number

Purchased at?

Date of Purchase



Nuquest International Inc.

19360 Rinaldi St. Suite 332 Porter Ranch, CA 91326

www.nuquestintl.com

iGym™ is a trademark of and used under license from Powersky Century Holdings Ltd.

All right reserved, unauthorized duplication is a violation of law